

Functional impairment of circulating FcεRI⁺ monocytes and myeloid dendritic cells in hepatocellular carcinoma and cholangiocarcinoma patients

Martín-Sierra C.^{1,2,*}, Martins R.^{2,3,4,5,*}, Laranjeira P.^{1,2}, Abrantes A.M.^{2,5}, Oliveira R.C.^{2,5,6}, Tralhão J.G.^{2,3,4,5}, Botelho M.F.^{2,5}, Furtado E.³, Domingues R.⁷, Paiva A.^{1,2,8,#}

1 - Unidade de Gestão Operacional em Citometria, Centro Hospitalar e Universitário de Coimbra (CHUC, Portugal).

2 - Coimbra Institute for Clinical and Biomedical Research (iCBR), Faculty of Medicine, University of Coimbra, (Coimbra, Portugal).

3 - Unidade Transplantação Hepática Pediátrica e de Adultos, Centro Hospitalar e Universitário de Coimbra (UTHPA, CHUC, Portugal).

4 - Serviço de Cirurgia Geral, Unidade HBP, Centro Hospitalar e Universitário de Coimbra (CHUC, Portugal).

5 - Instituto de Biofísica, IBILI, Faculdade de Medicina, Universidade de Coimbra (Portugal).

6 - Serviço de Anatomia Patológica, Centro Hospitalar e Universitário de Coimbra (CHUC, Portugal)

7 - Mass Spectrometry Centre, Department of Chemistry & QOPNA, University of Aveiro, Campus Universitário de Santiago, Aveiro (Portugal).

8 - Instituto Politécnico de Coimbra, ESTESC-Coimbra Health School, Ciências Biomédicas Laboratoriais (Portugal)

* These authors contributed equally to this work

Corresponding author:

Artur Paiva

Flow Cytometry Unit, Clinical Pathology Service, Centro Hospitalar e Universitário de Coimbra, Praceta Prof. Mota Pinto, Ed. S. Jerónimo, 3º piso, 3001-301, Coimbra, Portugal.

Telephone: +351 239400563

Fax: +351 239824416

E-mail: artur.paiva@chuc.min-saude.pt

Supporting Information

Methods

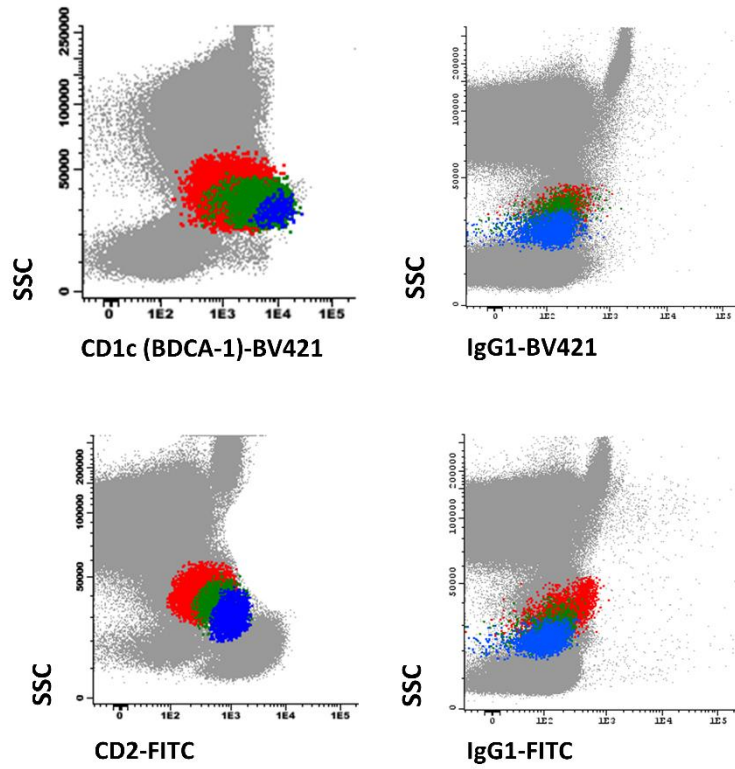
For the isotype control of CD1c-BV421 (Mouse IgG₁, κ), 250μL of PB were stained with CD45-V500-C (clone 2D1, Becton Dickinson Biosciences (BD), San Jose, CA, USA), anti-IgE-PE (clone BE5, EXBIO Praha, Vestec, Czech Republic), HLA-DR- PerCP-Cy5.5 (clone L243, BD), CD16-PE-Cy7 (clone 3G8, BD), CD33-APC (clone P67.6, BD) and CD14-APC-H7 (clone MφP9, BD), for the identification of the population of interest and BV421 Mouse IgG₁, κ Isotype Control (clone X40, BD) was also added. Then the protocol was followed as described in the main manuscript.

For the isotype control of CD2-FITC (Mouse BALB/c IgG₁, κ), 250μL of PB were stained with CD45-V500-C (clone 2D1, BD), anti-IgE-PE (clone BE5, EXBIO), HLA-DR-V450 (clone L243, BD), CD16-PE-Cy7 (clone 3G8, BD), CD33-APC (clone P67.6, BD) and CD14-APC-H7 (clone MφP9, BD), for the identification of the population of interest and FITC Mouse IgG₁, κ Isotype Control (clone MOPC-21, BD) was also added. Then the protocol was followed as described in the main manuscript.

Figure's legend

Figure S1. Negative control for CD2-FITC and CD1c-BV421 staining. The bivariate dot plot histograms on the left illustrate the expression levels for CD1c-BV421 (up) and CD2-FITC (down) for the populations identified in this study: **CD14^{high} FcεRI⁺ monocytes** (red events), **CD14^{dim} FcεRI⁺ monocytes** (green events) and **mDCs** (blue events). The bivariate dot plot histograms on the right display the isotype control for these fluorochromes. The table presents CD2 and CD1c

mean fluorescence intensity (MFI) for each identified cell population as well as isotypes MFI values.



	MFI CD2	MFI CD1c	MFI IgG1-FITC	MFI IgG1-BV421
FcERI ⁺ monocytes CD14 ^{high}	364	1924	112	175
FcERI ⁺ monocytes CD14 ^{dim}	787	5871	44	145
mDCs	1021	9562	35	127